

Design News

New collections, haute happenings and more

by LAUREN FETTERMAN and VALERIE FOSTER



left: The studio's main space opens to a gracious entry and connects to Rinfret's office, a meeting room and rear office space. **above:** Rinfret in her light-filled office overlooking East Putnam and beyond.



sophisticated yet welcoming home," says Rinfret.

Gaining access to the new studio feels like an exclusive treat. The street entrance is through a stately black door on Lewis Street with a subtle sign. Up one flight is a door that opens up to a grand space with large windows that bring natural light onto the hand-painted chinoiserie wallcovering by Gracie. Honed matte marble floors by Greenwich Tile and elegant window treatments complete this "wow" of a first impression.

All 3,800 square feet of the new space is dedicated to the firm's interior design business, and each team member has their own office and window within the open floor plan. A design library houses thousands of the best design resources, while multiple meeting areas and a chic kitchen and coffee spot offer the highest level of comfort and service for clients.

Rinfret, Ltd. moves to a new design studio in Greenwich

J'adore Décor

Cindy Rinfret, principal designer of the award-winning, full-service interior design firm Rinfret, Ltd. and author of two Rizzoli books on "Greenwich Style," has relocated her firm to a new design studio at 39 Lewis Street in Greenwich. The new open and light-filled

space provides Rinfret and her design team with a larger, more functional workspace that benefits the creative process and client meetings.

Still in the heart of downtown Greenwich, the new space is close to the Avenue and next to one of Rinfret's favorite restaurants, Le

Penguin, and parking tends to be easier at the new address as well.

Rinfret and her team moved over this past summer, and her vision of an inspiring design studio in a "Modern European" aesthetic is now a reality. Inspired by her international travels, Rinfret had a hand in every last detail, from architectural elements to the window treatment fabrics and wallcoverings. "Everyone who walks into this space says, 'Wow,' because they expect an office, but instead it's inviting and beautiful, like a

RINFRET, LTD.
39 Lewis Street
Greenwich
203-622-0000
rinfretltd.com

RINFRET, LTD.

timeless tranquility

"When we design a functional space, we never forget that it is also a living space," says Cindy Rinfret. To create an environment that exudes comfort and glamour, coupled with the maximum utility that her discerning Greenwich client required, the designer chose luxurious materials that come together in a suite of graceful and glowing spaces.

A main ingredient of this bath is Taj Mahal quartzite stone, a beautiful and durable surface named for its most visible exponent. Rinfret sourced the stone from the same marble lot in Italy, carefully book-matching the slabs for the floors and walls of the shower, and the material is used throughout the space: hand-carved for a curvaceously sculptured bench, for custom cut floor tiles, and for sink and vanity tops. This elegant component also provided one of Rinfret's biggest challenges—the stone's journey from Italy to Greenwich to installation point, painstakingly delivered to the second-floor location in pristine condition.

No detail is overlooked in Rinfret's custom-designed cabinetry, with its serpentine sink, exquisitely fitted vanity and meticulously configured drawers and cabinets that put all of the linens, beauty aids and electronics out of sight but at the client's fingertips, where and when she might need them. Beyond the sparkling fittings of nickel and crystal, Rinfret amplified the space's shimmer with spectacular matte metallic Gracie wall panels, positioned behind a freestanding tub with a burnished nickel finish. Enhancing the romantic feel of this vignette, Rinfret installed softly billowing sheers at the windows that frame it.

The end result is an exquisite combination of beauty and function—an ideal pairing for which the designer and her staff strive. "I think the space where you start and end your day should absolutely have both," says Rinfret. —JO

INTERIOR DESIGN

Rinfret, Ltd.
Greenwich, 203-622-0000
rinfretltd.com

BUILDER

D.H.E. Company, Inc.
New York City, NY
212-228-8005
dhecompany.com

**WALLPAPER
INSTALLATION**

JM Shea
Ridgefield, 203-431-4435
jmshea.com

WINDOW TREATMENTS

Hemming Birds
Bedford Hills, NY
914-666-5812

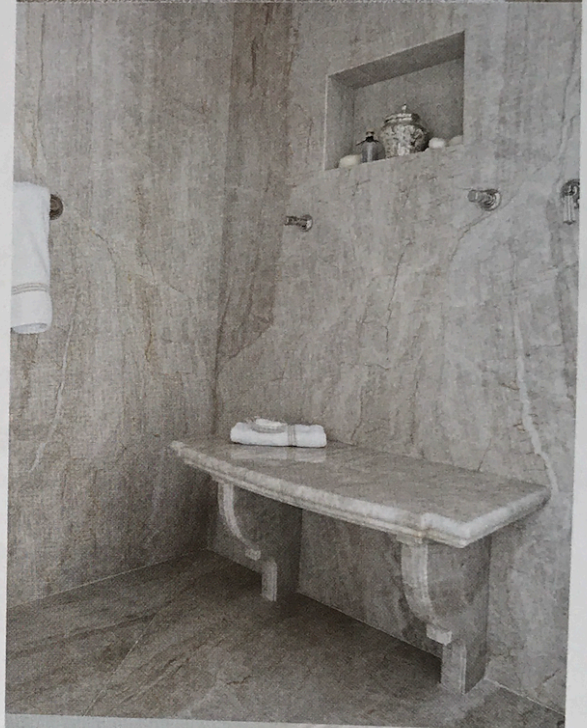
STONE FABRICATION

Dushi Marble & Granite
Stamford, 203-978-0038
dushimg.com

STONE SUPPLIER

Everest Marble
Norwalk, 203-956-7428
everestmarblect.com

This bath is a study in details—metallic and crystal elements were used throughout the space, as well as flooring, cabinet tops and a perfectly matched shower enclosure in Taj Mahal quartzite stone. **opposite:** For bathing, Gracie wallcovering and a Waterworks tub clad in burnished nickel enhance the room's glowing ambience.



finalists **Kitchen Design:** Trad/Classic



Rinfret, Ltd.

The inspiration for this gorgeous yet highly functional kitchen by Rinfret, Ltd. centered on the custom La Cornue range in brilliant black with polished nickel trim. Cindy Rinfret designed a coordinating matching strapped hood and surrounded the range with top-of-the-line appliances. The center island, with book-matched Coral Sea granite slabs atop a custom-built walnut-stained base, is a striking focal point, and the perimeter counters are stainless steel. The Rinfret-designed and D.H.E.-executed custom cabinetry, painted a glossy black, adds to the sophisticated palette. Seating options include Hickory Chair barstools and Global Views leather dining chairs around a Gravino Woodworking table, and luxe accents include Charles Edwards lanterns above the island, a Visual Comfort chandelier, a Murano glass stove backsplash from Urban Archaeology and faux-stone wallcovering by Lee Jofa. —JJ

INTERIOR DESIGN

Rinfret, Ltd.
Greenwich, 203-622-0000
rinfretltd.com

BUILDER

D.H.E. Company, Inc.
New York City, NY, 212-228-8005
dhecompany.com

WALLPAPER INSTALLATION

JM Shea
Ridgefield, 203-431-4435
jmshea.com

WINDOW TREATMENTS

Hemming Birds
Bedford Hills, NY
914-666-5812

STONE FABRICATION

Dushi Marble & Granite
Stamford, 203-978-0038
dushimg.com

STONE SUPPLIER

Everest Marble
Norwalk, 203-956-7428
everestmarblect.com